

# 5<sup>th</sup> Pan-Hellenic & 4<sup>th</sup> Pan-European

Scientific & Professional  
Nursing Conference  
Of the  
Hellenic Regulatory  
Body of Nurses

Corfu  
Corfu Holiday  
Palace Hotel  
May 10-13, 2012

Second Announcement  
& Call for Abstracts

A collaboration with the National School of Public Health



With the support of FEPI 

Under the auspices of the Ministry of Health





# **5<sup>th</sup> Pan-Hellenic & 4<sup>th</sup> Pan-European**

**Scientific & Professional  
Nursing Conference  
Of the  
Hellenic Regulatory Body of Nurses**



**Hellenic Regulatory Body of Nurses  
(H.R.B. of N.)**

**Corfu Holiday Palace Hotel  
May 10-13, 2012**



## HELLENIC REGULATORY BODY OF NURSES


### Board of Directors of the E.N.E. (HRBofN)

---

<b>President:</b>	<b>Dimitris Skoutelis</b>
General Secretary:	Aristides Daglas
1 <sup>st</sup> Vice - President:	Nikolaos Orfanos
2 <sup>nd</sup> Vice - President:	Georgios Dontsios
Deputy Secretary:	Konstantia Belali
Treasurer:	Lambros Bizas
Org. Secretary:	Georgios Avramides
Members:	Dimitrios Pistolas
	Georgios Arvanitis
	Nikolaos Giakis
	Dimitrios Dimitrellis
	Apostolos Kotsis
	Georgios Pondisides
	Rizos Rizopoulos
	Fotis Spiratos

A collaboration with the National School of Public Health



With the support of FEPI 

Under the auspices of the Ministry of Health



## PRESIDENTS'S WELCOME MESSAGE

---

Ladies and gentlemen, in defiance of the times, we believe that this year's "5<sup>th</sup> Pan-Hellenic and 4<sup>th</sup> Pan-European Scientific and Professional Nursing Conference" which will take place in Corfu Island from 10 to 13 May at the *Corfu Holiday Palace Hotel*, will provide a chance for an exceptional and constructive scientific meeting which will surely exceed all our expectations.

The main objective of this Conference is to give a comprehensive perspective throughout a breadth of subjects, given that the field of nursing is facing new and continuous challenges. Technological developments and growing knowledge production are two key factors that any nurse should be knowledgeable about, in order to practice the profession more effectively. We should develop the nurses' self-esteem, participatory and critical viewing qualities in order to protect and promote the nursing profession.

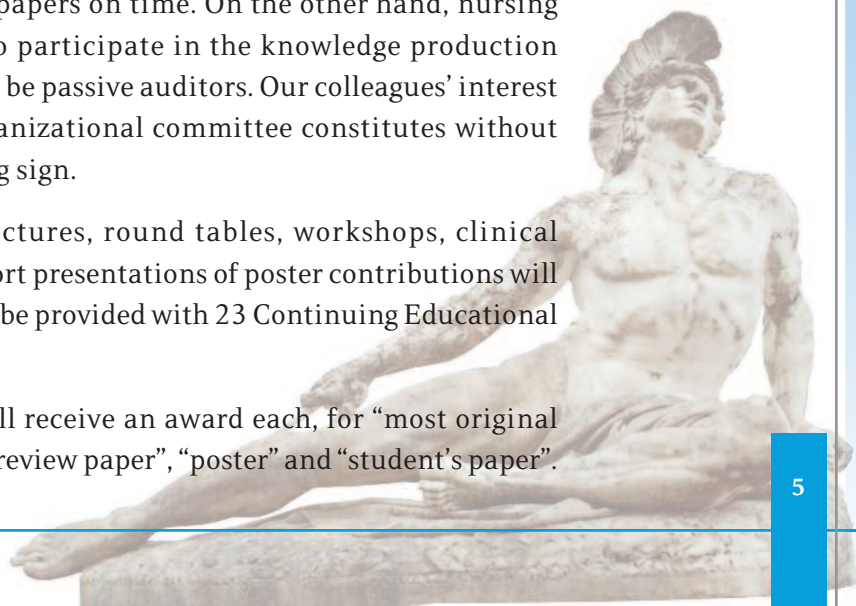
Thus, active participation in this Conference is absolutely necessary, in order to clearly show the high-quality of teaching, research, and clinical work that we provide to the Greek population. We owe it to those who have never ceased their visionary efforts to make our Regulatory Body of Nurses fulfill its commitments.

We expect that this Conference will succeed not only in its educational purposes, but also in showing aspects of many interesting subjects and solutions to a breadth of problems that affect the nursing community as a whole.

The great success of our previous congresses will surely encourage all colleagues to submit their papers on time. On the other hand, nursing students are encouraged to participate in the knowledge production process actively rather than be passive auditors. Our colleagues' interest in participating in the organizational committee constitutes without doubt, another encouraging sign.

During the Conference, lectures, round tables, workshops, clinical education seminars and short presentations of poster contributions will take place. Participants will be provided with 23 Continuing Educational Credits.

Four top-quality papers will receive an award each, for "most original research paper", "literature review paper", "poster" and "student's paper".



Eminent European scientists have been invited to share their knowledge and experiences on nursing science and practice in their countries, information about the prevalent conditions, as well as, relative educational ongoing processes.

We would like to congratulate all the distinguished Keynote speakers, who willfully share their knowledge with us and give our warmest thanks to them as well as to all the members of the scientific, honorary, international, local Conference committees for their dedication and their valuable contribution to this exceptional scientific, professional and social event.

We have the pleasure of inviting you to walk together towards substantial and multilateral nursing education through this scientific event, which will once again emphasize the fact that nurses want and can do the best.

Apart from the scientific part, the island of Corfu will provide all the delegates with multiple cultural and recreational options.

We are confident that you will attend and participate, and as such we expect to welcome you in Corfu to this top event of the Greek nursing community.

**Dimitrios Skoutelis,**

**President**

**Hellenic Regulatory Body of Nurses**

## COMMITTEES

---

### Organizing Committee

---

**President:** Aristidis Daglas

**1<sup>st</sup> Vice - President:** Nikolaos Orfanos

**2<sup>nd</sup> Vice - President:** Dimosthenis Salikidis  
Georgios Avramidis  
Georgios Arvanitis  
Anastasia Georgiadou  
Eftichia Giagkou  
Nikolaos Giakis  
Evdoxia Giannopoulou  
Dimitrios Dimitrellis  
Georgios Dontsios  
Georgios Indas  
Georgios Kourtis  
Dimitrios Koutsourakis  
Apostolos Kotsis  
Ekaterini Mandraveli  
Michail Mantzanas  
Georgios Meraveliotakis  
Louloudia Morfakidou

Ioannis Bakelas  
Georgios Baliozoglou  
Vaia Baloti  
Symeon Barkas  
Lambros Bizas  
Kalliopi Brachadini  
Konstantinos Nianiopoulos  
Christos Papadimitriou  
Nikolaos Papandreou  
Evaggelia Papapaschali  
Dimitrios Pistolas  
Georgios Pontisidis  
Rizos Rizopoulos  
Michalis Rovithis  
Fotios Spiratos  
Chrysoula Stouka  
Margarita Taousani  
Michalitsa Christodoulou

### Conference Secretariat

---



**FREI** FREI S.A. Travel – Congress

3, Paparigopoulou St., 105 61, Athens, Greece  
Tel.: +30 210 3215600, Fax: + 30 210 3219296  
www.frei.gr e-mail: info@frei.gr

## COMMITTEES

---

### Scientific Committee

---

<b>President:</b>	<b>Kalokerinou Athina</b>	Kafkaia Theodora
<b>1<sup>st</sup> Vice - President:</b>	Kourakos Michail	Koukia Evmorfia
<b>2<sup>nd</sup> Vice - President:</b>	Pisimisi Eleni	Maggoulia Polixeni
	Georgios Avramidis	Mitrena Ekaterini
	Adamakidou Theodouli	Belali Konstantia
	Athanasopoulou Maria	Bellali Thalia
	Albani Heleni	Bizas Lambros
	Apostolara Paraskevi	Pavlatou Niki
	Arvaniti Maria	Pistolas Dimitrios
	Gerali Maria	Sarafis Pavlos
	Dasiras Fragiskos	Saridi Maria
	Thanasa Georgia	Tani Sofia
	Theodosopoulou Eleni	Tsiou Chrysoula

### International Scientific Committee

---

<b>President:</b>	<b>Roka Vassiliki</b>	Sasic Dragan
<b>Vice – President:</b>	Bizas Lambros	Sasso Loredana
	Apple Kathy	Silvestro Annalisa
	Broadway Myra	Simunec Dragica
	Carrigy Anne	Voycey Kris
	Desrosier Gyslaine	Zydzianaite Vilma
	Koutroubas Theodoros	Giakoumaki Irini
	Nicursor Timofte Micrea	Drakopoulou Marianna
	Papadopoulos Irena	Prezerakos Panagiotis
	Papastavrou Evridiki	Rekliti Maria
	Rocco Gennaro	Stamatopoulou Evaggelia
	Ryan Anne – Marie	Christodoulou Eleni

# GUIDELINES FOR THE SUBMISSION OF ABSTRACTS

---

**Deadline for the Submission of Abstracts: 02/17/2012**

## General Information

---

Abstracts may be submitted either by e-mail or through the Conference web page as follows:

### A. By e-mail

The abstract should be sent by email to [enne2012-abstracts@frei.gr](mailto:enne2012-abstracts@frei.gr) with the following attachments:

- i. The abstract's communication form in the previous page duly completed; and
- ii. The paper's abstract in a Word file which must include the title, the authors, their institutions of origin and the text of the abstract.

### B. Through the conference web page

An abstract may be submitted online through the Conference web page [enne2012-abstracts@frei.gr](http://enne2012-abstracts@frei.gr) where all the necessary information for the proper submission of your abstract is available.

1. Abstracts submitted after the deadline (02/17/2012) **will not** be accepted.
2. Abstracts sent by fax or post will **not be** accepted.
3. At least one of the authors of the paper must be registered at the Conference (i.e. registration fee settled).
4. The authors of a review must not exceed 3 persons and the authors of a research paper must not exceed **7 (except for special cases of research activities)**.
5. Upon receipt of the abstract, the Conference Organiser will send an acknowledgement of receipt to the author in charge of correspondence with the organiser. If such acknowledgement of receipt is not received within three days, please contact the Conference Secretariat at the following number: +30 210 3215600 or via e-mail at [enne2012-abstracts@frei.gr](mailto:enne2012-abstracts@frei.gr).
6. The abstracts' evaluation results shall be sent to the authors in charge of correspondence no later than the **22<sup>nd</sup> of February 2012**.
7. Abstracts submitted may be withdrawn only until the 17th of February 2012, which is the closing date for the submission of abstracts.
8. The Conference Secretariat is available for any further information at the following number: +30 210 3215600 or via e-mail at [enne2012-abstracts@frei.gr](mailto:enne2012-abstracts@frei.gr)

# GUIDELINES FOR THE SUBMISSION OF ABSTRACTS

---

## Preparation - Structure

---

Given that the abstracts will be included in the Abstracts CD exactly as they are submitted, the authors are kindly requested to follow **precisely** the detailed instructions given below on the preparation of abstract text.

### Instructions on the preparation of *abstracts*

The structure of a research abstract must comprise the following distinct paragraphs:

- Introduction
- Objective
- Example and Methodology
- Results
- Conclusions

The structure of an abstract literature review must comprise the following distinct paragraphs:

- Introduction
- Objective
- Literature Review
- Conclusions

*The corresponding title should be typed before each paragraph in **bold** case characters.*

E.g. **Introduction, Objective, Material and Methodology, Results, Conclusions.**

1. In case of a poster presentation, the points mentioned above apply to posters as the case may be, and the relevant literature should also be included.
2. The text of the abstract should not exceed 350 words in length.
3. The text dimensions should be suitable for transcription to A4 size (21 cm x 29.7cm), with the top and bottom margins set to 2.54 cm and the left and right margins set to 3.17 cm (*which are the standard dimensions of a Word file*).
4. Each text must be typed using the Arial 11 pt. font type, formatted in single space and fully justified.
5. The title of the paper must be typed in **bold** title case characters and center justified.
6. The title should be followed by the name(s) of the author(s).
7. The names of the authors must be in nominal case, written in title case, with the first name (unabbreviated) preceding the surname (e.g. Antonis Papadopoulos).
8. The name of each author is followed by a number in superscript indicating the position, institution of origin as well as the city of each author.  
E.g. Costas Papadopoulos<sup>1</sup>, Irini Nikolaou<sup>2</sup>, Nikolaos Anagnostou<sup>1</sup>  
1. Nurse BSc, General Hospital “Aghios Andreas”, Patras  
2. Nurse BSc, University Hospital of Ioannina.
9. The name of the author who will present the paper must be underlined.  
E.g. Costas Papadopoulos<sup>1</sup>, Irini Nikolaou<sup>2</sup>, Nikolaos Anagnostou<sup>1</sup>
10. The text may contain standard abbreviations, tables and diagrams on the condition that they do not exceed the text justification margins, and that the text does not exceed the total number of 350 words.
11. The Scientific Committee reserves the right to reject a paper if it does not comply to the above criteria.

## GUIDELINES FOR THE SUBMISSION OF ABSTRACTS

---

12. The wishes of the authors as well as the organisational requirements of the Conference will be taken into consideration in selecting the method of presentation either oral or poster, also depending on the available time and space.
  13. Final classification in a thematic unit and the final method of presentation of the papers which will be accepted are determined by the Scientific Committee that will evaluate the paper abstracts.
- 

### **Oral Presentation**

The time limit for oral presentation has been fixed to eight (8) minutes. It is imperative that this time limit must not be exceeded.

---

### **Posters**

All poster frames will be numbered and a list of names/numbers will be posted in a prominent place.

The authors are responsible for putting up the posters using materials provided by the Conference Secretariat as well as for their removal. The recommended dimensions for posters are: 120 cm high by 80 cm wide.



### COMPLIANCE WITH HEALTHY LIFE-STYLE FACTORS IN MALE RECRUITS OF THE HELLENIC NAVY

Dr Vasiliki Roka<sup>1</sup>, Paraskevi Apostolara<sup>2</sup>, Marianna Drakopoulou<sup>2</sup>, Nikoletta Roka<sup>3</sup>, Dimitris Skafidakis<sup>4</sup>, Dr Mally Ehrenfeld<sup>5</sup>, Dr Athena Kalokerinou<sup>6</sup>

1. Lieutenant Commander (HN), RN, PhD. Educational department of Armed Forces Officers Nurse School, Athens, Greece.
2. RN, MSc, PhD(c). National and Kapodistrian University of Athens, Greece.
3. Chemist. Aristotle University of Thessaloniki, Greece.
4. Dentist, MSc(c). Hellenic Open University, Greece.
5. RN, PhD, Professor, Head of Nursing department, Tel-Aviv University, Ramat-Aviv, Tel-Aviv, Israel.
6. Associate Professor, Community Nursing Laboratory, Faculty of Nursing, National and Kapodistrian University of Athens, Greece.

**Introduction:** The institution of Armed Forces has a national, social and historic character for Greek Population. Many people are engaged to as cadres, civilian staff or enlisted men who fulfil their military service, which is compulsory for all male Greek citizens. The contribution of the Greek Armed Forces to the Health Status of the population is very important, especially for the lower socio-economic classes, complementing the state's efforts in the health sector.

**Objective:** The aim of the study was to evaluate lifestyle factors associated with health status and healthy behaviors in male conscripts of the Hellenic Navy. **Example and Methodology:** A representative sample of 1350 healthy male conscripts of the Hellenic Navy was conducted in two training centres from February through August 2007. Data was collected by means of self-administered questionnaires. The response rate was 83.8%. Demographic characteristics, smoking habits, alcohol consumption, physical activity and adherence to the Mediterranean diet were associated to the compliance to health related lifestyle factors. Statistical analysis was processed by means of the Statistical Package of Social Sciences, SPSS 13.0.

**Results:** Male recruits had a mean age of 24.6 years (SD=3.1 years). 54, 95% of the participants were smokers and 21, 1% of them stated that because of smoking they couldn't participate in certain activities which demanded physical effort. 47, 7% admitted that during military service they were smoking more comparing with their life before. 70, 7% mentioned that they consumed more than 5 drinks in one day, less than 2 times in a month, while 82,2% admitted that they had consumed more than 5 drinks and after that they had driven a vehicle at least once during last month. 46, 1% had a physical activity daily. 32, 7% were at risk for overweight, while 7,1% of them were obese. 65,0% underestimated their weight status. Recruits with higher educational level, non smokers and non alcohol consumers reported healthy nutritional habits and better oral health status.

**Conclusions:** Demographic characteristics, socio-economic background, educational level and lifestyle factors were interrelated and co-related with health status and healthy behaviors. Therefore all these dimensions should be considered as potential targets for future health promotion strategies and interventions in the Hellenic Armed Forces.

## THEMATIC UNITS

---

Cardiovascular Nursing

Clinical Medical Nursing

Clinical Surgical Nursing

Community Nursing

Emergency and Intensive Care Nursing

Hospital Infections Nursing

Legal and Ethical Issues in Health Sciences – Bioethics

Mental Health Nursing

Nursing Education

Nursing Management – Management Of Health Services

Occupational Health Nursing

Oncology Nursing

Pediatric Nursing

Public Health – Epidemiology

Renal Nursing

## CONFERENCE COMPETITION

---

The Organizing and Scientific Committee of the 5<sup>th</sup> Pan-Hellenic and 4<sup>th</sup> European Scientific and Professional Nursing Conference instituted a competition to award four full papers of the Conference as follows:

Along with the prize, the four best full papers will be published optionally in the Hellenic Journal of Nursing Science, which is the official journal of the Hellenic Regulatory Body of Nurses.

---

### **1<sup>st</sup> Prize**

for Original  
Research Paper

### **2<sup>nd</sup> Prize**

for Original  
Literature  
Review Paper

### **3<sup>rd</sup> Prize**

for Original  
Poster  
Presentation

### **4<sup>th</sup> Prize**

for Original  
Student's Paper

#### **Awarding conditions**

1. Original papers in which authors have collected research material or data over the past five years and are highly relevant to the subject of the Conference.
  2. The structure of the papers should follow the guidelines given to the authors of the Hellenic Journal of Nursing Science.
  3. Text of the papers should be submitted until **02<sup>nd</sup> March 2012**
- 

#### **Submission of papers**

Papers should be submitted in word document by e-mail at [enne2012-abstracts@frei.gr](mailto:enne2012-abstracts@frei.gr)

---

#### **Evaluation and selection criteria for the papers' awarding**

Papers will be evaluated by the awarding committee. Papers will be graded with the use of a weighted scale and classified according to their order.

---

#### **The main criteria are:**

- The degree of topic's originality.
  - The innovation and suitability of the methods.
  - Papers' potential contribution to the health sector.
  - The prospect of continuing research.
  - The presentation of papers at the Conference
- 

#### **Prize awarding**

Prizes will be awarded during the Closing Ceremony of the Conference. During the awarding ceremony, at least one of the authors of the prized papers should be present.

# INSTRUCTIONS FOR AUTHORS

---

## Proper way of writing and length of the text

Accuracy and simplicity. Ensuring cohesion of the content.  
Correct use of grammar and syntax. Usage of the 3rd singular or 1st plural.  
All manuscripts should be written in word.doc format only.  
12-point Arial Font, Complete Alignment, 1, 5 line Spacing.  
2, 54 Margins up, down, right, left, page numbering.  
The text should not exceed 5 pages.

## Manuscripts should be set out as follows:

### 1. Introduction

The introduction of the study will describe the basic parameters clearly and succinctly, which will introduce the reader to the subject. The introduction will include 1 to 3 pertinent references, preferably of current reviews concerning the subject.

---

### 2. Main Body

The development of the main part of the study will be based on the following principle: 80% of the text will cover basic knowledge, which informs and educates the non-expert and the remaining 20% will introduce the current trends and evolutions in order to satisfy the demanding reader.

Each part of the Main Body should include a sufficient number of references, all of which should not be more than 20. References should have a clear temporal distribution (if applicable) of the described data.

In this part, references of specific clinical or research interest are of preference, in order to raise awareness of the forward-looking nurse.

---

### 3. Conclusions

This part of the study will inform the reader of the following:

- What is acceptable about the subject today?
  - What parts are ongoing?
  - What are the prospects?
- 

### 4. References

- References should not exceed the  $20 \pm 5$ . From these, the basic overviews of the last 2-3 years will be accompanied by the sign \*.
  - References should be cited using the Harvard convention.
- 

### 5. Key-Words

Full text will necessarily be accompanied by key words.

## GENERAL INFORMATION

**Time and Venue** The 5<sup>th</sup> Pan-Hellenic & 4<sup>th</sup> Pan-European Scientific & Professional Nursing Conference of the Hellenic Regulatory Body of Nurses, will be held at the Corfu Holiday Palace, from May 10th to May 13th, 2012.

<b>Important Dates</b>	Conference Dates:	May 10-13, 2012
	Pre-registrations Deadline:	February 11, 2012
	Deadline for submission of abstracts:	February 17, 2012
	Reply on the approval of abstracts submitted:	February 29, 2012

Registration Fees		Up to 02/11/2012	From 02/12/2012 to 04/10/2012	From 04/11/2012 and on site
	ENE members		€50	€65
Unemployed Nurses		FREE	€15	€30
Students		FREE	€15	€30

**The Conference** ■ Attendance of all Conference proceedings

**Registration** ■ Admission to the exhibition area

**Fee includes** ■ Conference Material

■ Coffee Breaks

■ Certificate of attendance

■ Opening Ceremony & Reception

Participation in the Clinical Workshops is FREE but registration is required at the Conference Secretariat. Due to limited availability, registration request for the Clinical Workshops will be on first come first served basis.

**Presentations** Presentations during the Conference will be as follows:

### **Oral Presentations – Poster Presentations**

■ The duration of each Oral Presentation must not exceed 8 minutes.

■ Each Poster Presentation will be posted at a specified time (morning/afternoon), its dimensions must not exceed 1,20cm in height by 0,80cm in width and will be posted using the material provided by the Conference Secretariat.

**Conference Secretariat** During the Conference, the Secretariat will be open:

May 10 08:00 – 21:00

May 11 08:00 – 20:00

May 12 08:00 – 20:00

May 13 08:00 – 16:00

**Language** The official language of the Conference is Greek. Presentations by foreign delegates will be made in English with simultaneous translation.

**Accreditation** 23 Postgraduate Credits will be awarded for participation in the Conference.

## GENERAL INFORMATION

**Audiovisual** All Conference rooms are equipped with:

- Data video projector
- Computer
- Projection screen
- Laser pointer

The audiovisual material to be used by each speaker must be handed to the Conference technical Secretariat at least one hour before the scheduled presentation.

**Commercial Exhibition** During the Conference, an exhibition area for pharmaceutical companies as well as publishers of medical books and journals will be open.

For more information interested parties should contact the Conference Secretariat through e-mail at [enne2012-exhibition@frei.gr](mailto:enne2012-exhibition@frei.gr) or through tel.+30 2103215600, 211 6005600

**Accommodation** A sufficient number of rooms has been reserved in the following hotels and will be a priority in the selection.

Hotel	Rate per person in a double room	Additional Charge for single use
Bretagne	€ 374,00	€ 40,00
Hermes	€ 380,00	€ 40,00
Atlantis	€ 380,00	€ 40,00
Konstantinoupolis	€ 380,00	€ 40,00
Mon Repos Palace Hotel	€ 495,00	€ 45,00
Hellinis Hotel	€ 495,00	€ 45,00
Arion Hotel	€ 510,00	€ 60,00
City Marina Hotel	€ 530,00	€ 60,00
Arcadion Hotel	€ 535,00	€ 45,00
Cavalieri Hotel	€ 550,00	€ 60,00
Bella Venezia Boutique Hotel	€ 560,00	€ 60,00
Ariti Corfu Hotel	€ 560,00	€ 60,00
Corfu Mare Boutique Hotel	€ 560,00	€ 45,00
Louis Corcyra Beach Hotel	€ 572,00	€ 45,00
Divani Corfu Palace Hotel	€ 580,00	€ 45,00
Daphnila Bay Hotel	€ 590,00	€ 60,00
Corfu Palace Hotel	€ 590,00	€ 90,00
Grecotel Eva Palace Hotel	€ 590,00	€ 45,00
Grecotel Corfu Imperial Hotel	€ 598,00	€ 55,00
Corfu Holiday Palace Hotel	€ 598,00	€ 55,00

## GENERAL INFORMATION

### All the above rates are:

- per person in a single or double room
- for a total of three nights (05/10-13/2012)
- include breakfast and all applicable taxes
- transportation from/to the hotels to the Conference Venue

### Reservation, Payment and Cancellation Terms:

- Three overnight stays (05/10-13/2012) are mandatory.
- Reservations are confirmed only after full payment.
- A copy of the deposit slip must be sent to the Conference Secretariat by fax or e-mail including the participant's full name as well as a contact telephone number.
- All reservations are confirmed in writing to the e-mail address or fax number specified to the Conference Secretariat.
- Cancellations for reservations must be made in writing and are subject to cancellation fees, depending on the date when they are made, namely:
  - Up to 02/09/2012, no cancellation fee
  - Up to 04/10/2012, 50% cancellation fee
  - After 04/11/2012, 100% cancellation fee

### Transportation Transportation by luxury buses will be provided from the following cities:

Athens	€ 50	Kavala	€ 50	Larissa	€ 55
Alexandroupolis	€ 55	Kalamata	€ 60	Nafplio	€ 60
Argos	€ 50	Karditsa	€ 50	Patras	€ 50
Volos	€ 50	Kozani	€ 35	Ptolemaida	€ 40
Grevena	€ 35	Komotini	€ 50	Sparta	€ 60
Thessaloniki	€ 45	Corinth	€ 50	Trikala	€ 50
Ioannina	€ 30	Lamia	€ 50	Tripolis	€ 55

- Transportation will take place under the condition that the number of participants exceeds 40 passengers per bus.
- Above prices include a return to the city of origin as well as the cost of the ship Igoumenitsa/Corfu/Igoumenitsa.
- Departure and return times will be announced at the though the internet and at the H.R.B.of N. Newspaper, once all reservations are made.
- In case of cancellation of transportation, amounts that have been paid to the Conference Secretariat will be refunded after the Conference.
- Prepayment of transportation is necessary.

### Airline- Bookings

- Delegates who wish to travel by airplane are requested to contact the Conference Secretariat by fax : +302103219296 or by e-mail: [enne2012-airtickets@frei.gr](mailto:enne2012-airtickets@frei.gr)
- The Conference Secretariat will proceed to the issue of the ticket only after the acceptance of the offer of airline reservation
- Pre - payment with a credit card to the Conference Secretariat is required in order to issue the ticket

### CORFU

The city of Corfu is characterized by its ever-present Venetian style as well as by elements influenced by the British and the French. It is a cosmopolitan city which radiates a sense of grandeur with its main attractions being the great “Spianada” square -ranking as the largest in the Balkans- the Old and New “Frourio” (Fort), the City Hall (San Giacomo Theater), the “Kanoni” (canon), the “Mon Repo” but also the Byzantine and Post Byzantine History Museums.

Perhaps Corfu’s most famous attraction is the small island in front of Kanoni, joined to it through a small strip of land, on top of which is the church of Panagia of the Vlachernon and the famous Pontikonisi. On top of this small island there is the small church of Pantokratoras (11<sup>th</sup> or 12<sup>th</sup> century). Also notable buildings are the palace of Michail and Georgios, one of the most beautiful palaces of Georgian style that the British rule (αγγλοκρατία) left behind. Traditional dishes of Corfu’s cuisine are “pastitsada”, “sofrito” and “bourdeto”.

Saint Spyridon Trimithountos is the honoured saint of the island and his sacred body is housed in the temple that was named after him. This temple is one of the most unique in existence.

Corfu has historical buildings, like the English Residency, the old Palace of Saints Michael and George which houses the only Sino-Japanese museum in Greece, the Liston, the Kapodistrias’ House (Mansion), the Metropolitan Palace, Corfu’s Reading Society Building, the Ionian University Building, the City Hall, the famous San Giacomo Theatre, the Ionian Parliament and the Ionian Academy.

Corfu is famous for its musical tradition, from the “kantades” to the legendary “Filarmoniki”

### SIGHTS OF THE ISLAND

Corfu is an island of endless natural beauty and elegance, with magnificent landscapes and stylish buildings.

Among the island’s most interesting monuments is Achillion, the palace of Queen Elisabeth (Sissy) with the famous sculpture of “Achilleas Thniskon” and the marvelous artworks, like murals and paintings.

The well known Peleka’s area offers a magnificent sunset view, and the byzantine fort “Aggelokastro” is located in Palaiokastritsa.

Excellent blonde sandy beaches can be found in Ai Gordi, Glyfada, Korission lake, Agio Georgio Pagon, Marathia, Gardeno, Kassiopi, Sidari, Roda, Acharavi, Almyro, Dassia and Palaiokastritsa. Amazing combination of mountain and sea provide the inland villages of Corfu, like Sinarades, Aghios Matthaios, Varypatides, Korakiana, Giannades, Karousades, Episkepsi, Chlomos, Spartylas and Lefkimmi with unparalleled images and lush landscape.

## HOTELS

### CORFU HOLIDAY PALACE HOTEL



Corfu Holiday Palace Hotel (ex Hilton) is situated at the idyllic area of Canoni and is one of the first luxurious hotels on the island offering the most beautiful view in Corfu, the Pondikonissi. This complex of 45.000 m<sup>2</sup> is surrounded by green pines, cypress and eucalyptus trees, fully supporting its prominent position among the leading hotels in Corfu. The hotel is 4km away from the airport, very close to the centre of Corfu as well as to the most important archaeological sites, making it an ideal base for those who want to explore the island.

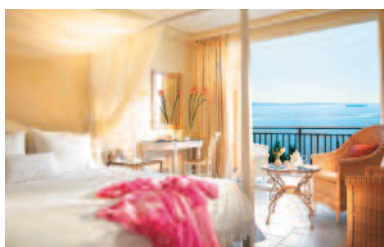


## HOTELS



### **GRECOTEL CORFU IMPERIAL HOTEL**

The Grecotel Corfu Imperial Hotel, situated on a private, green peninsula with a view to the Aegean Sea, is the best hotel in Corfu, with 3 private beaches and a big outdoors pool. Having its own little island, this hotel was inaugurated in 1994 and it has been charming Greek and foreign artists since.



### **GRECOTEL EVA PALACE HOTEL**

Built in one of the most romantic spots of the Ionian, the private peninsula of Kommemo in Corfu, Eva Palace Hotel is a unique heaven for travellers with style. Hidden in dense and exotic gardens, ideal for relaxing walks, this idyllic resort is a “private Eden”.



### **CORFU PALACE**

The Corfu Palace Hotel is an impressive and highly praised 5 star luxury establishment, offering a traditional and elegant atmosphere. It is situated on the outskirts of the historic Corfu Town overlooking the pretty bay of Garitsa, the Greek mainland and only 400 metres from the center of Corfu Town. That is why Corfu Palace Hotel can easily be classified as one of the most elegant and distinguished hotels in Greece.



### **DAPHNILA BAY HOTEL**

Daphnila Bay Hotel literally tumbles down the green hillside overlooking Dassia Bay. From the main building to the slope to the garden bungalows hidden amongst the mature gardens, the fresh scent of pine trees fills the air. The hotel offers a variety of sport activities, the best tennis club of the area, as well as Elixir ThalassoSpa with Aqua Elixir Thalasso Pool, Jacuzzi pool and a variety of natural therapies based on Greek herbs and flowers.



### **DIVANI CORFU PALACE**

The Divani Corfu Palace is a modern luxury 4 star hotel situated on the green side of the Kanoni hill, overlooking the pristine waters of the lagoon. Only 3 km from the Corfu town centre and 1.5 km from the beach of Mon Repos, it provides not only the perfect location for those who wish to be near Corfu town's life and famous historical centre, but crave the beauty and seclusion of the surrounding hills.



### LOUIS CORCYRA BEACH HOTEL

Louis Corcyra Beach Hotel is spread over 78 acres of unspoiled landscape, offering great facilities for a great stay. The hotel is only 100 metres from the shopping area and a 10-minute drive away from Corfu and the airport. Guests can head to the popular tourist resort which is overlooking Gouvia Bay or make a short 5-minute walk to the shops, bars and restaurants of Gouvia village.



### CORFU MARE BOUTIQUE

Corfu Mare is a newly renovated boutique hotel and is ideally situated in a quiet area, just half a mile from the town of Corfu. To stimulate the senses of guests, rooms are decorated according to themes with trendy and unusual wallpapers, colors and furniture.



### ARITI HOTEL CORFU

Hotel Ariti, surrounded by an acre of grounds, is centrally located in the Kanoni area, only 2 miles from Corfu Town, half a mile from the airport and 2.5 miles from the port.

From the Kanoni, visitors will enjoy the best view of the island, facing the famous Pontikonisi.



### BELLA VENEZIA

The Bella Venezia Boutique Hotel, housed in a gloriously restored neo-classical mansion, is an oasis of calm in the heart of Corfu's vibrant capital. Bella Venezia is one of the island's premier hotels, its reputation based not only on the impeccable, personalized service offered by its long-time staff but also on its fine amenities. Located in a quiet street, the Bella Venezia is a stone's throw away from Corfu Town's historic "Spianada" and guests have easy access on foot to all the important sites and attractions of Kerkyra / Corfu.



### CAVALIERI HOTEL

Originally built in the 17th century as a nobleman's mansion, it opened its doors as a hotel in the mid 1960's, among the first luxury hotels in Corfu.

It is situated at the very heart of the Venetian old part of Corfu town, overlooking the lush greenery of the large Esplanade square and the Ionian Sea. Cavalieri Hotel offers you an elegant and relaxing atmosphere and outstanding friendly service.

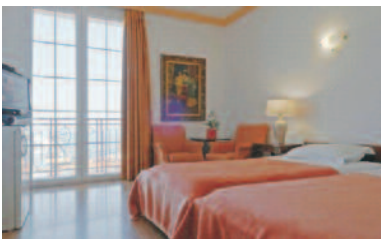
## HOTELS

---



### **ARCADION HOTEL**

Arcadion Hotel is located in the heart of the old town of Corfu and this excellent location providing the opportunity to enjoy your stay in Corfu in the most relaxing way, as it is an ideal hotel for all of those who like to be in the centre of Corfu town. Its dominant position promises to satisfy your expectations for an unforgettable stay in Corfu island.



### **CITY MARINA HOTEL**

Overlooking the endless blue sea and the imposing Venetian New Fort, in the enchanting old town of Corfu with the famous Liston (Spianada) and the church of Agios Spyridon, City Marina Hotel is the best option to enjoy the aristocratic ambience and to lose yourself in the labyrinth of senses in one of the most beautiful cities in Europe.



### **ARION HOTEL**

Arion Hotel, recently renovated, is situated in the beautiful area of Anemomylos, only 1,2 km away from the town center, 100m from the sea front, 2 km from Corfu International Airport and 3 km from Corfu port. Arion Hotel operates over 30 years and is considered as one of the best hotels in Corfu due to the high standards of service as well as the warm hospitality it offers.



### **HELLINIS HOTEL**

Hellinis Hotel is in the Kanoni area just 4km away from the scenic Corfu Town and 2,5 km away from Corfu International Airport. A 3 stars hotel, recently renovated (2011), provides stylish and soundproof rooms, all of them with air-condition and TV set.



### **MON REPOS PALACE**

The Hotel Mon Repos Palace is a very stylish hotel, situated in the Promenade area, at the tip of Garitsa Bay and with view to the old Venetian fort of the Town of Corfu. It is a perfect location for those who want an easy access to cosmopolitan and fashionable Corfu town.

## HOTELS

---



### **KONSTANTINOUPOLIS**

The Konstantinoupolis is a traditional hotel since 1862, situated in the Center of Corfu town and has a panoramic view directly to the Old Port and the two small islands of Vidos and Lazaretto. It provides fully equipped rooms in 4 out of the 5 floors and the public parking is exactly opposite the building.



### **ATLANTIS**

The Atlantis Hotel is located in Corfu next to the commercial and historical center of the island, making it one of the most convenient town hotels of Corfu.



### **HERMES**

The Hermes hotel is located in the middle of the beautiful town of Corfu in a friendly and pleasant atmosphere. Recently renovated, it gives priority to comfort, aesthetics and respect for tradition.



### **BRETAGNE**

Just a few kilometers from the airport and the Corfu town, Bretagne is a friendly hotel, located in a quiet area. All its traditional, Greek-style rooms provide all the necessary amenities. A range of convenient services are just 300 meters away, including restaurants and mini markets.



## Conference Secretariat



**FREI** S.A.  
**TRAVEL - CONGRESS**

3, Paparigopoulou St.  
105 61, Athens, Greece

Tel.: +30 210 3215600, Fax: + 30 210 3219296  
www.frei.gr e-mail: [info@frei.gr](mailto:info@frei.gr)